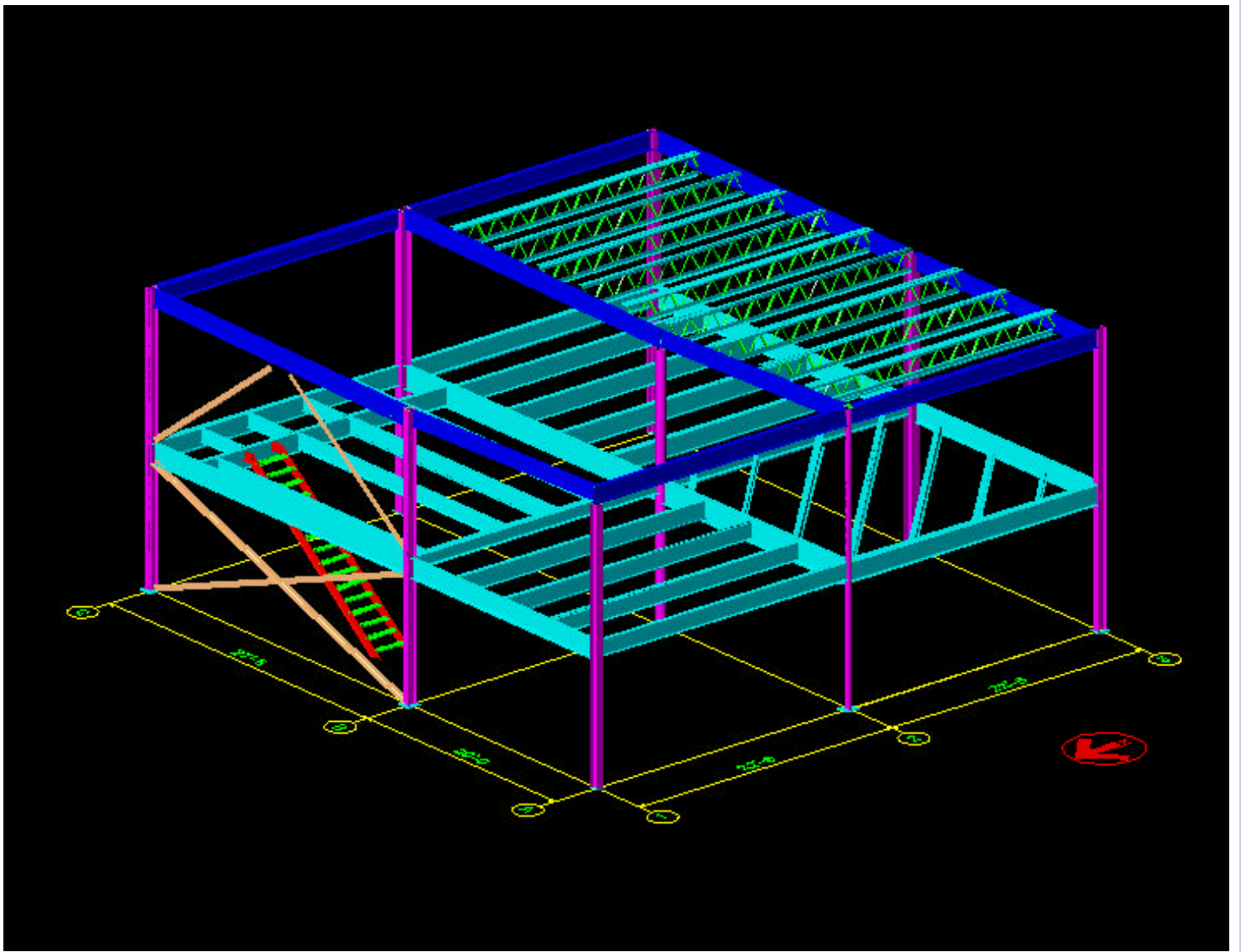


DetailCAD

AutoCAD® Based Steel Detailing Software



THE VERSATILE PROGRAM THAT FITS ALL YOUR NEEDS

Visit our web site at detailcad.com today!

autodesk®
authorized developer

DetailCAD

AutoCAD® Based Steel Detailing Software

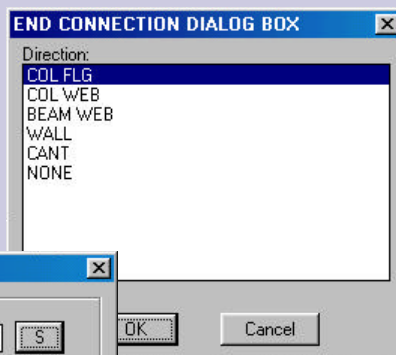
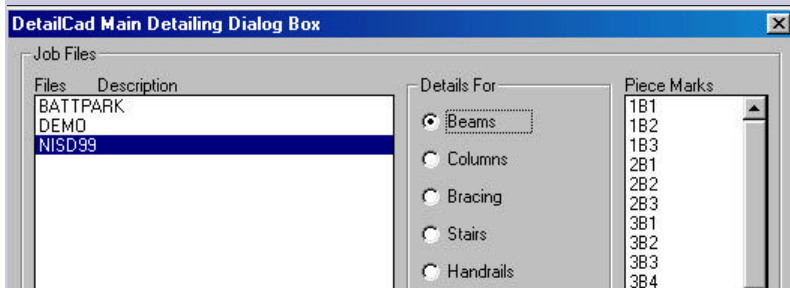
The easiest, most productive detailing software for the money...

Easy...

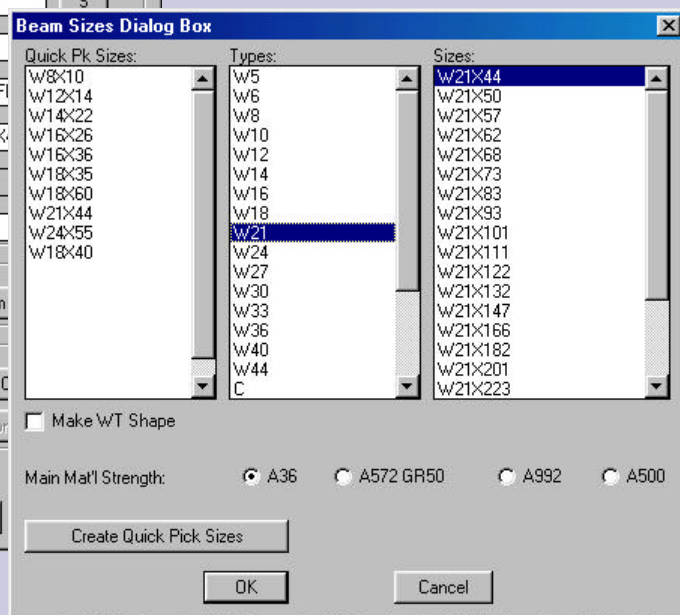
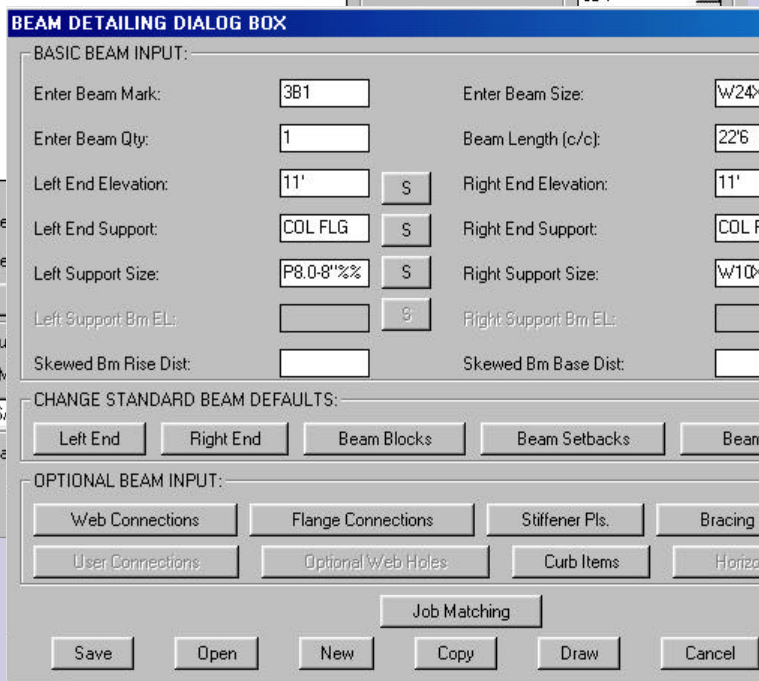
We've made DetailCAD easy to learn by utilizing the dialog box format for input, and by providing convenient menus and toolbars for common tasks.

productive...

DetailCAD is a highly automated program working inside AutoCAD® that produces superior quality shop details with a minimum of input and enhancement.



DetailCAD
is easily
customized to
any fabricator's
standards.



affordable.

Check our web site for current pricing
detailcad.com

DetailCAD was written by detailers just like you. Our price remains low because we want every detailer to be able to afford an automated steel detailing program.

- ◆ PIECE-BY-PIECE INPUT OR PLAN INPUT
- ◆ BEAM TO COLUMN MATCHING
- ◆ STANDARD AND CUSTOM CONNECTIONS
- ◆ USER-DESCRIBED CONNECTIONS
- ◆ USER-CONTROLLED DEFAULTS
- ◆ USER-DEFINED MARKING SYSTEMS
- ◆ OPTIONAL CARRY THROUGH MARKS
- ◆ CUSTOMIZABLE BILL OF MATERIAL
- ◆ MENUS PROVIDING MANY UTILITIES
- ◆ *PLUS MUCH, MUCH MORE...*

DetailCAD is capable of downloading CNC data as well as other data needed for material management software.

24" x 48" (24" x 48")

4 #4

4 #4

4 #4

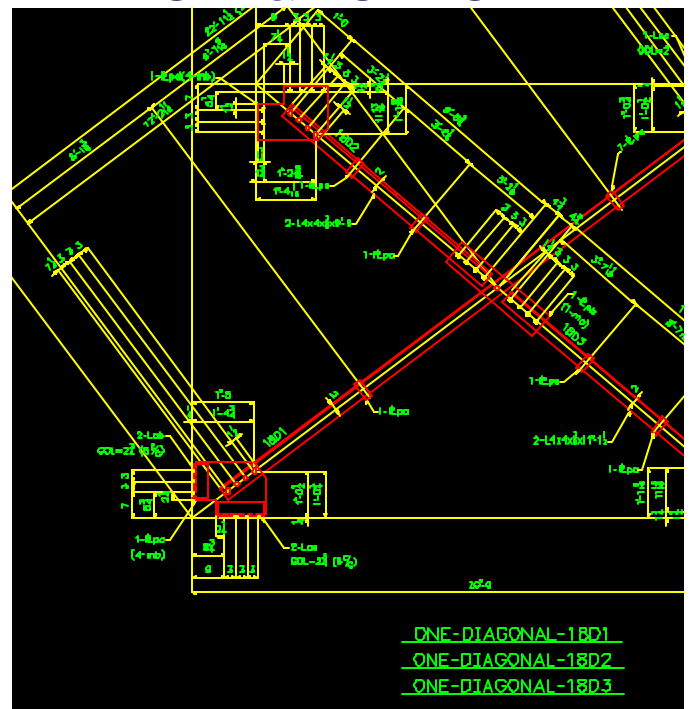
4 #4

1-2.000 (ON 2.000)

27'-0" (1-W21-44-27'-0) AS (27'-0)

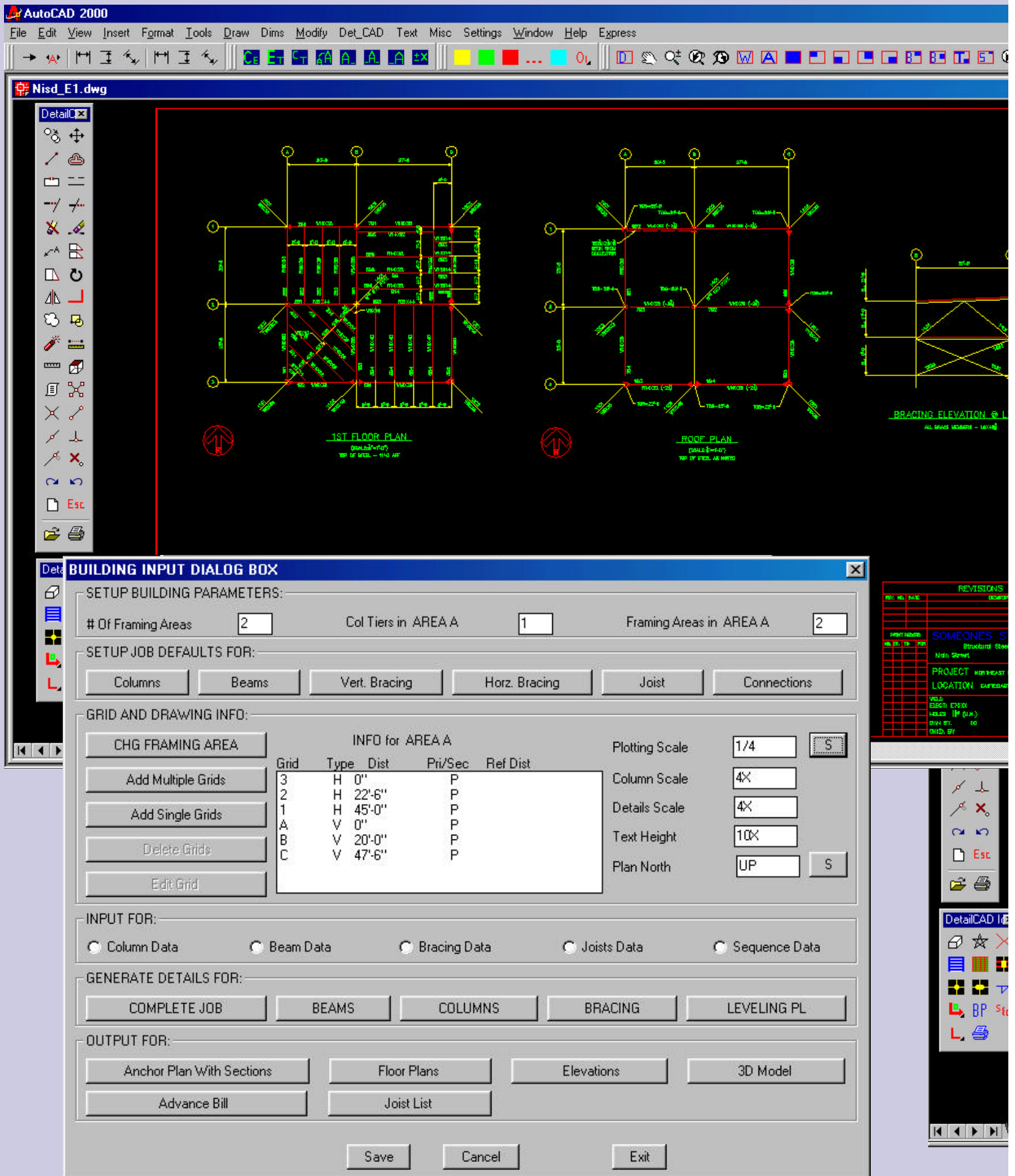
ONE-BEAM-55

VERTICAL & HORIZONTAL



EXAMPLES OF ANCHOR SETTING AND ERECTION PLANS, STAIRS, HANDRAILS, AND WELDED FRAMES APPEAR ON FOLLOWING PAGES.

DetailCAD will generate plans and 3D models with a completed. Generate shop details, joist lists, and adv



The screenshot shows a Windows command prompt window titled 'cmd'. The command prompt displays the current directory as 'C:\Users\user\Documents' and lists several files and folders. A red rectangle highlights the command prompt area.

```

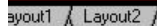
C:\Users\user\Documents>

```

The directory listing shows the following files and folders:

- ANY
- 10
- ME
- 1

*No modeling training
necessary for
DetailCAD's Plan Input!*



Planned release dates for these features are from May through December of 2001. Call for current status of new features under development and features coming soon.

STAIR DETAILING DIALOG BOX

BASIC STAIR INPUT:

Enter Stair Mark:

1751

Enter Stinger Size:

C12x20.7

Enter Stair Gly:

1

Scale Extra Length:

0

Blm Floor Elevation:

0

5

Top Floor Elevation:

11'-4

5

Total # Of Flises:

20

Dir. To First Rise:

6'13/16"

Horz Dist Of Treads:

17'-8"

Tread Width:

11

Stair Width:

7'-0

CHOOSE STAIR FRAMING TYPE:

☒ FRAME
☐ SINGLE

CHOOSE STAIR ENDS WHICH ARE SAME:

☒ NONE
☐ BOT
☐ TOP
☐ BOTH

CHANGE STANDARD STAIR DEFAULTS:

Stair Blocks

Section Marks

Selfbacks

Star Parameters

END CONNECTIONS:

SETUP BOTTOM FAR SIDE STRINGER

SETUP TOP FAR SIDE STRINGER

SETUP BOTTOM NEAR SIDE STRINGER

SETUP TOP NEAR SIDE STRINGER

FILE CONDITIONS

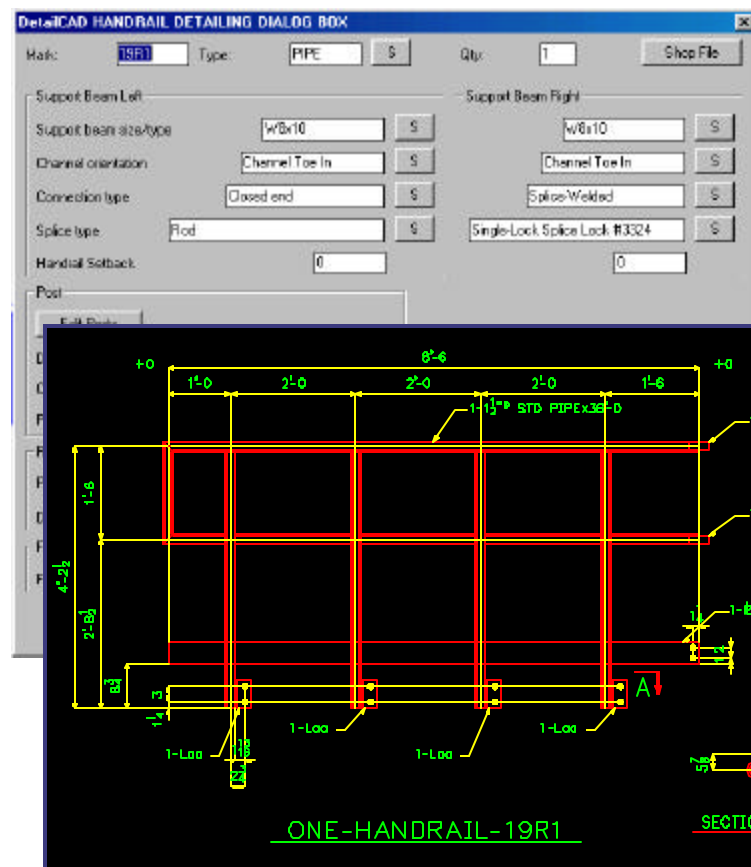
Save

Open

New

BILL OF MATERIAL

No. Pos	Stp Mark	Assy Mark	Description	Length Ft. In	Remarks
ONE	1751		STAIR FRAME		
2		ps	E-2x8	0 8/4	2.9
2		ps	E-2x8	0 8/4	3.6
2		ps	L-3x3x8	0 5/4	3.8
3B		ps	E-3x12	1 2/4	43.8
1		pd	E-10GAx8	3 0	12.1
1B		pd	E-10GAx23 1/2	3 0	596.4
2		md	C12x20.7	21 4/4	883.4
ONE	1752		STAIR FRAME		
2		ps	E-2x12	0 8/4	0.0
2		ps	L	0 8/4	3.8
2		ps	L-3x3x8	0 5/4	8.8
21		ps	CHS R-3x8 1/2	3 0	517.6
2		md	HC2x6x5	13 7/8	231.9

[illegible]

WHY CHOOSE DetailCAD ?

- ◆ DetailCAD was written and continues to be developed by detailers. We understand your needs and strive to meet them, maintaining a superior standard that we ourselves expect in a steel detailing software.
- ◆ Support is provided by detailers who are using the program themselves.
- ◆ DetailCAD gives the user a finished product that is of exceptional visual quality, conforming to industry standards and customized for each fabricator.
- ◆ Experienced detailers find that DetailCAD requires a minimum of training and will allow them to become almost immediately productive with it. The learning curve for DetailCAD is such that trainees who are proficient with AutoCAD® also quickly become productive and anxious to learn and do more.
- ◆ Fabricators and detailing firms that have purchased DetailCAD, but also own other detailing programs, report that while some systems work better on certain types of jobs, they typically use DetailCAD to produce the bulk of their work. They also tell us that DetailCAD outdoes systems costing much more.
- ◆ Many of our customers have let us know that they have saved enough on their first DetailCAD job to cover their investment in the program.

We at DetailCAD want only happy customers! That's why we let you try our software before you buy it. We'll send you a 45 day trial copy of DetailCAD for a deposit of \$150 plus shipping. You get to use the full package, after which if you decide DetailCAD is not for you, you may send the software, manual and lock back to us for a refund of your deposit. There is no time limit on how long you may keep the trial package before you return it. (Shipping costs not refundable.)

DetailCAD Steel Detailing Software for AutoCAD® requires the following:

- ◆ IBM compatible computer capable of running AutoCAD® 14
- ◆ Operating systems Win95, Win98, Win2000, or Windows NT4
- ◆ AutoCAD® version 14 or higher, including LT2000 and LT2000i

Current Pricing Information for DetailCAD:

Primary License for use of software on one station only with 3D Modeling*†	\$8800
Secondary License at same site on additional station, with 3D Modeling*†	\$2200
Primary License for use of software on one station without 3D Modeling*	\$8000
Secondary License at same site on additional station, without 3D Modeling*	\$2000
Yearly updates (based on 2001 prices) for Primary License	\$600
Yearly updates (based on 2001 prices) for Secondary License	\$150

*Customers using LT versions of AutoCAD® must also purchase an LT Toolkit and an ARX Loader for an additional cost of \$250 over the prices shown. †The 3D Modeling feature is not available for AutoCAD® 14 or LT versions.

NOTE: SUPPORT AND UPDATES ARE FREE FOR THE FIRST YEAR AFTER PURCHASE!

FOR ORDERING, CALL DAVID AT 406-862-7906 OR MARVIN AT 205-324-5741
ALSO VISIT OUR WEB SITE AT detailcad.com

